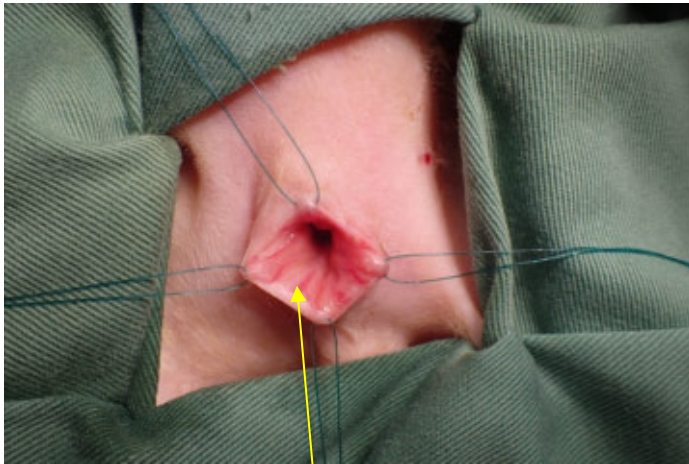
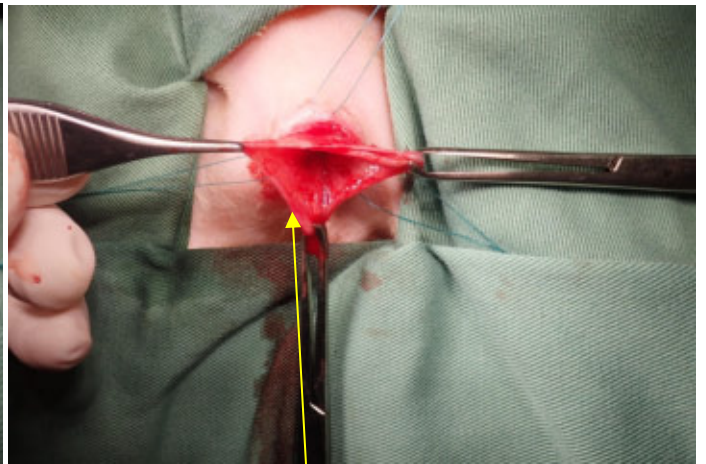


直腸粘膜プルスルー手術



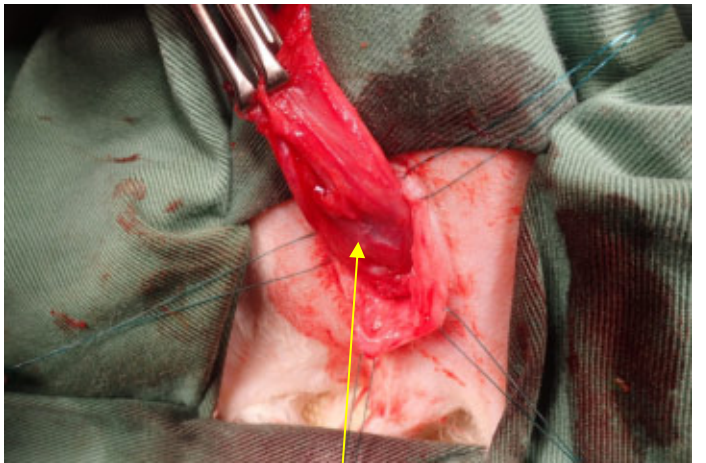
正常粘膜



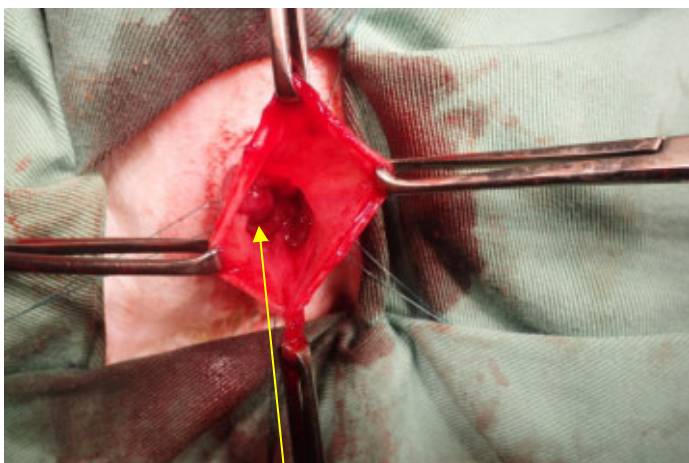
直腸粘膜のみを剥離



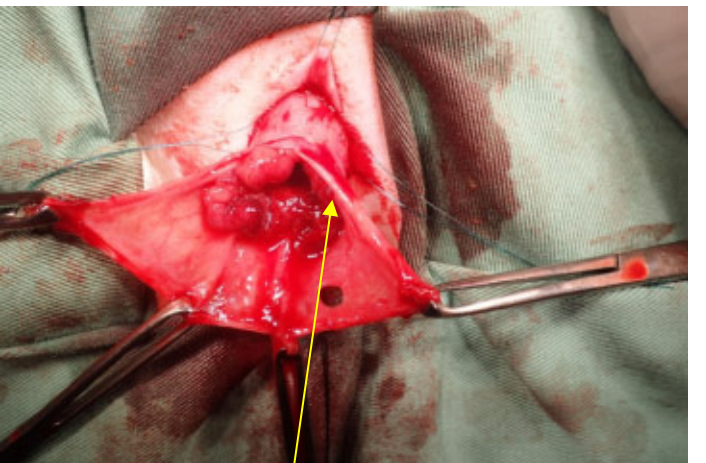
粘膜を剥離



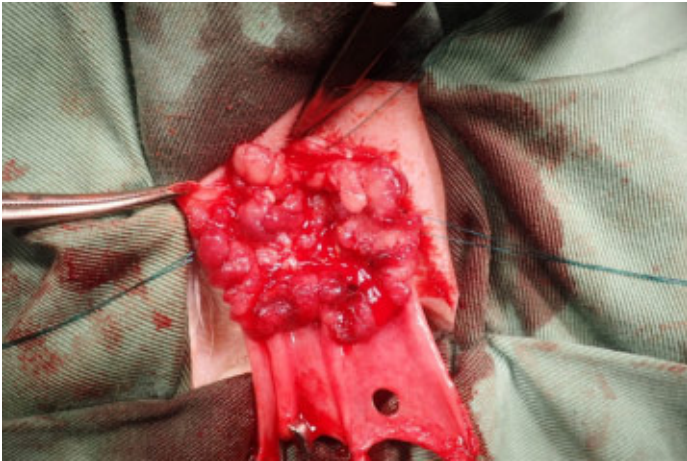
腫瘍部位



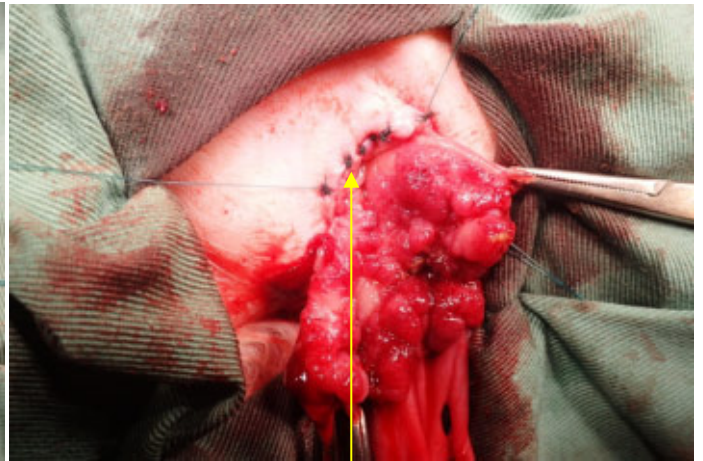
直腸腫瘍



粘膜を切開 腫瘍を確認



直腸をふさぐ形で腫瘍が存在



正常粘膜で切除し吸収性縫合糸で縫合



切除終了



切除腫瘍