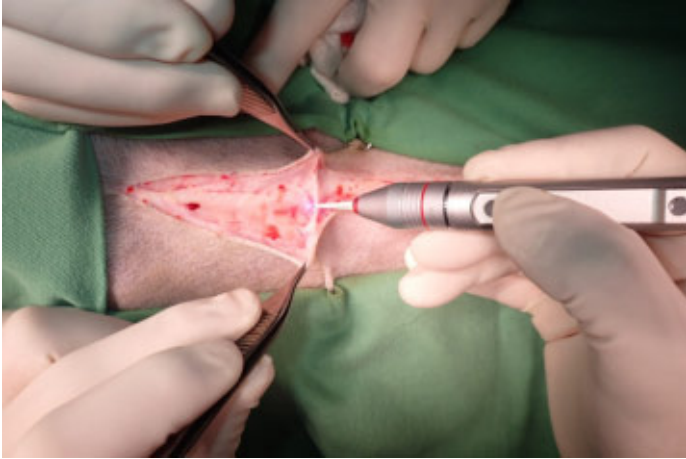
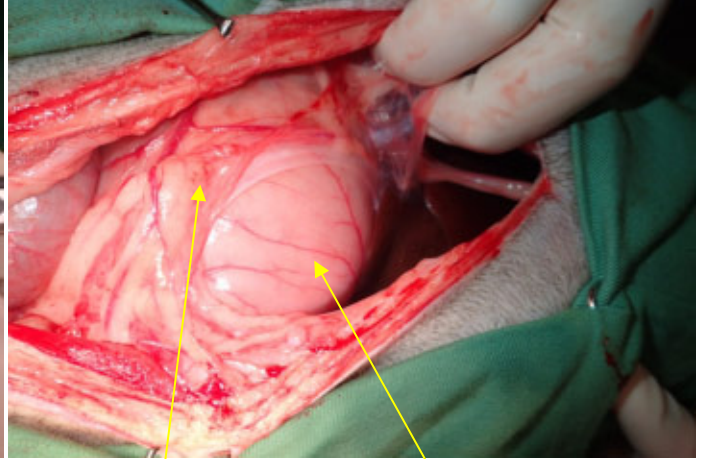


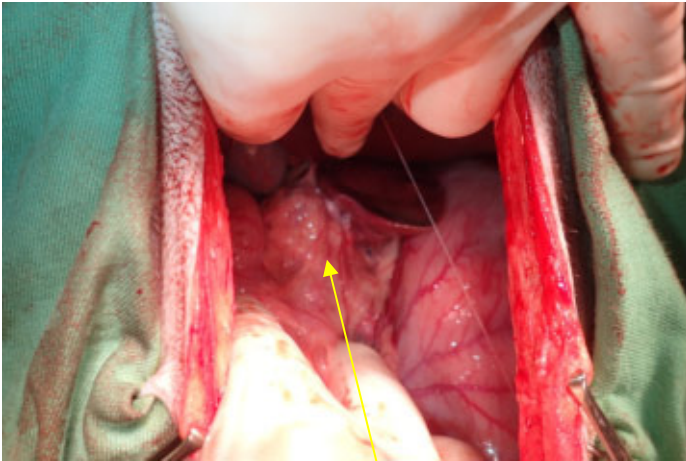
胃空腸吻合手術



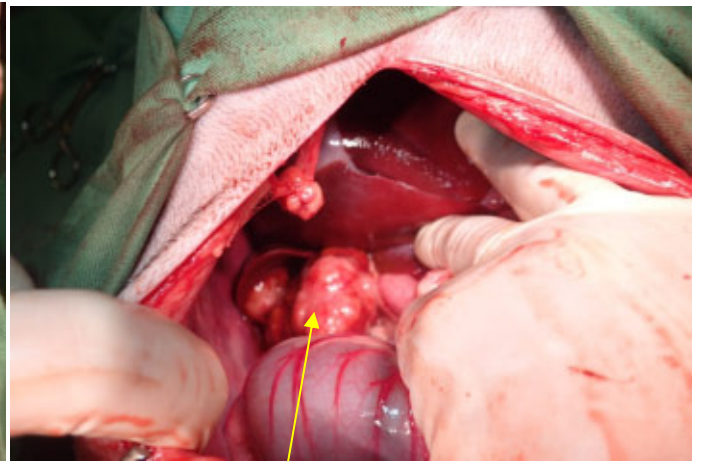
レーザーメスにて皮下組織切開



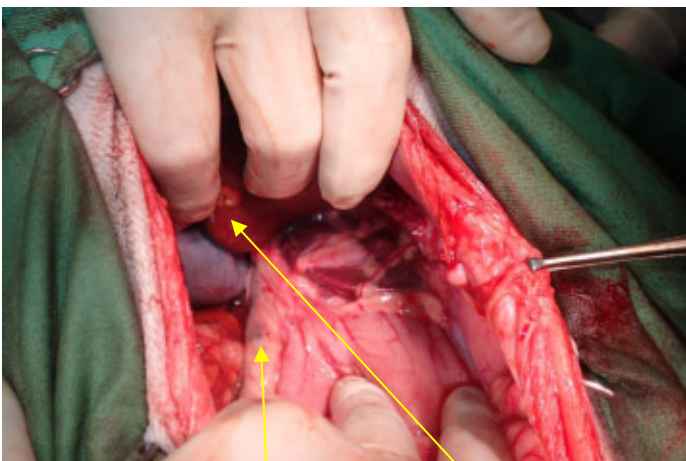
大網の癒着 胃に液体貯留のため拡張



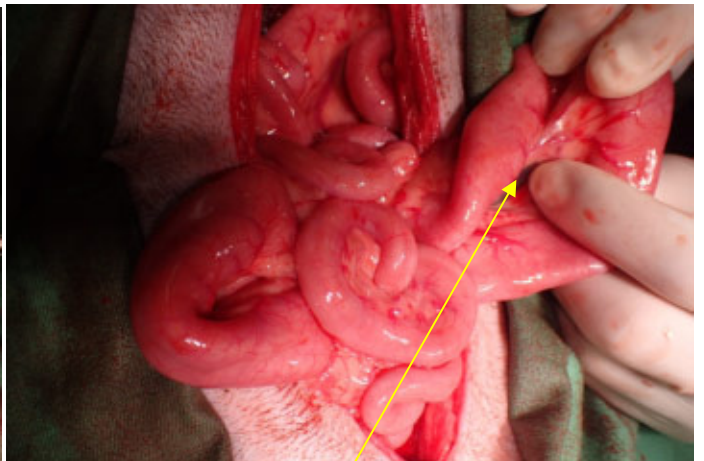
肝臓への転移病変に大網膜の癒着



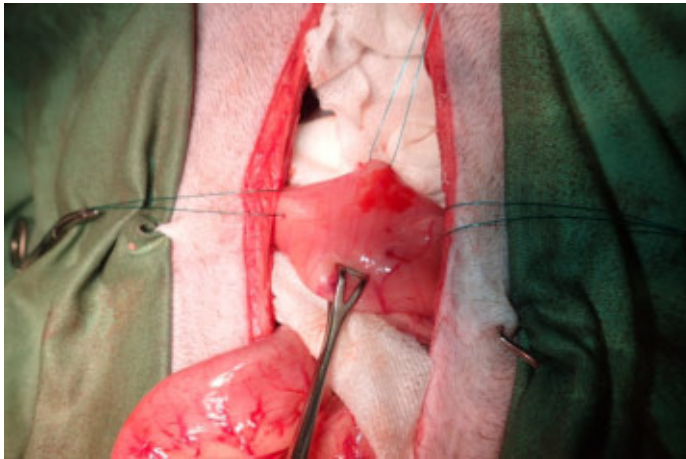
癒着を剥離



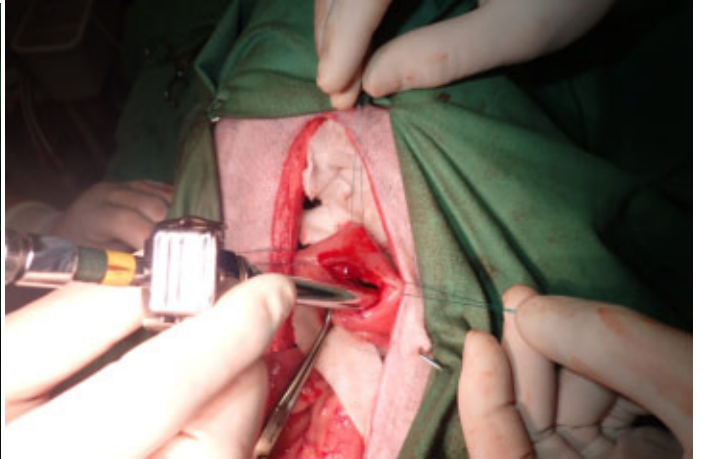
胆管の拡張 肝臓への転移病変



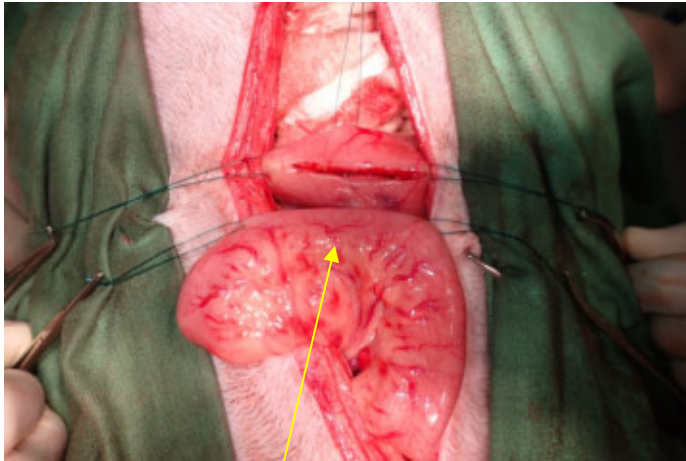
腸管の癒着



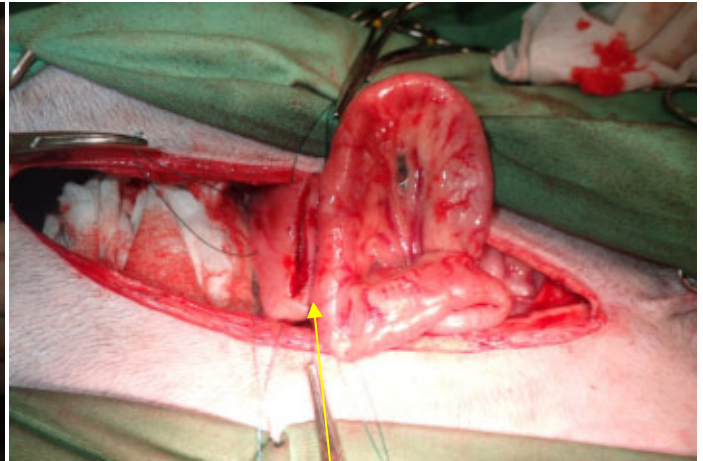
胃に支持糸



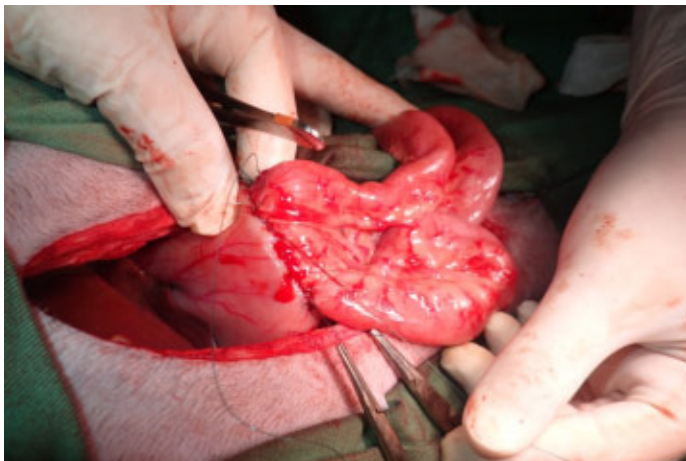
胃内容物を吸引



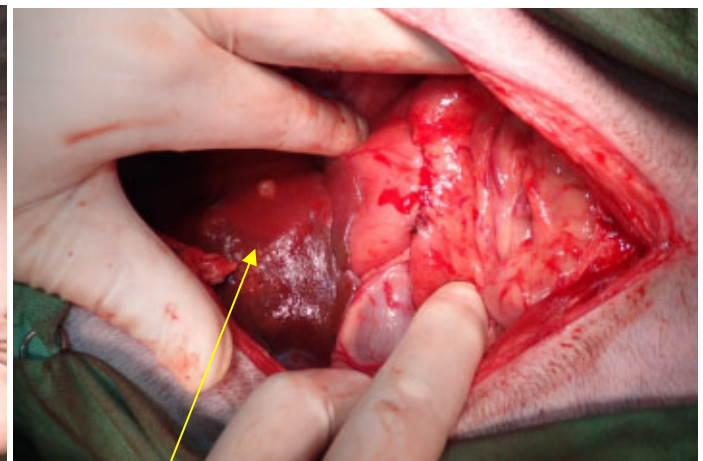
空腸との吻合部位を確認



胃と腸管を縫合し腸管切開



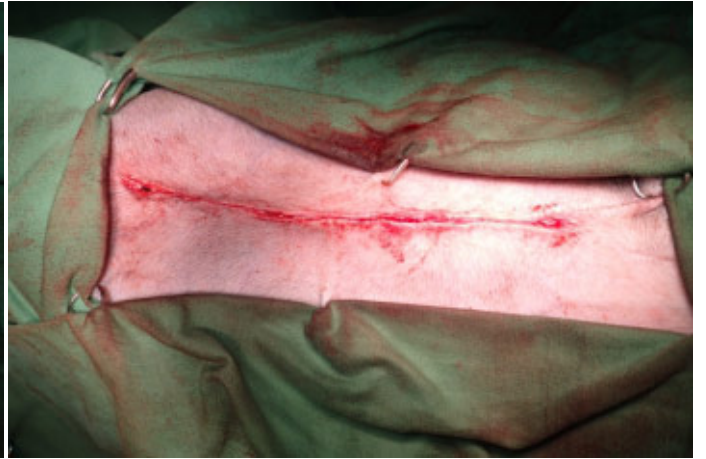
2重で縫合



肝臓転移病変 吻合終了



腹膜縫合



皮下組織縫合



皮膚縫合終了