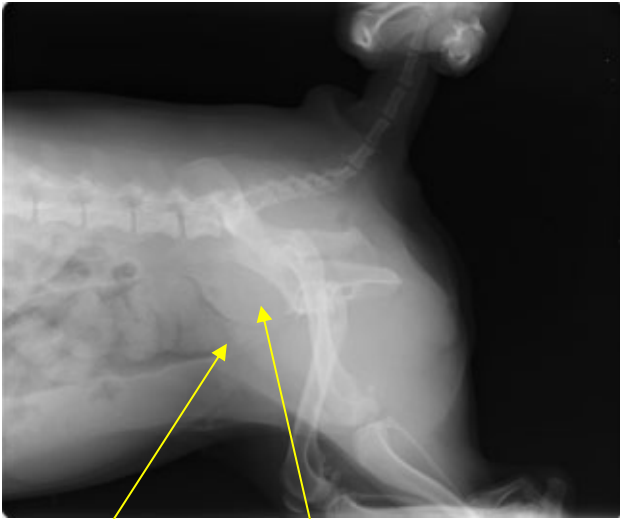
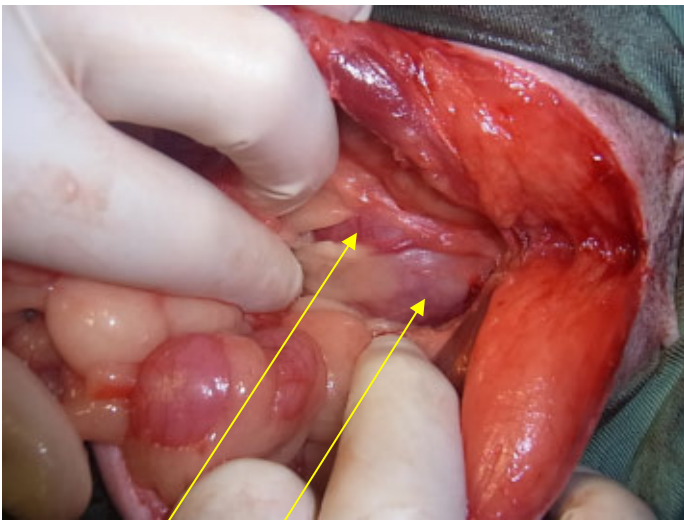
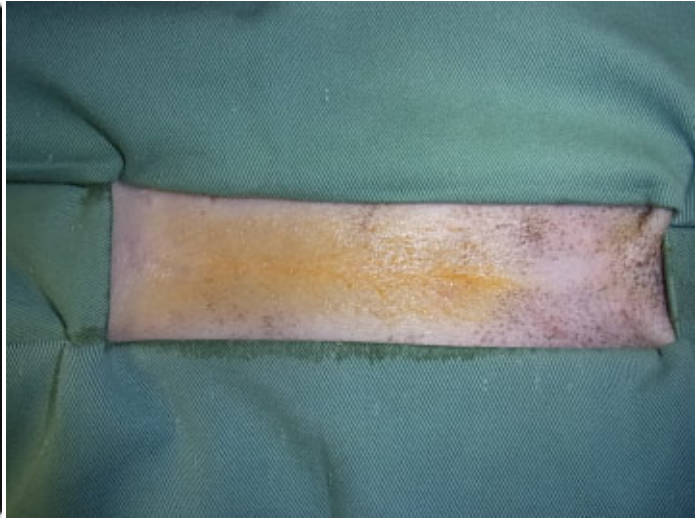


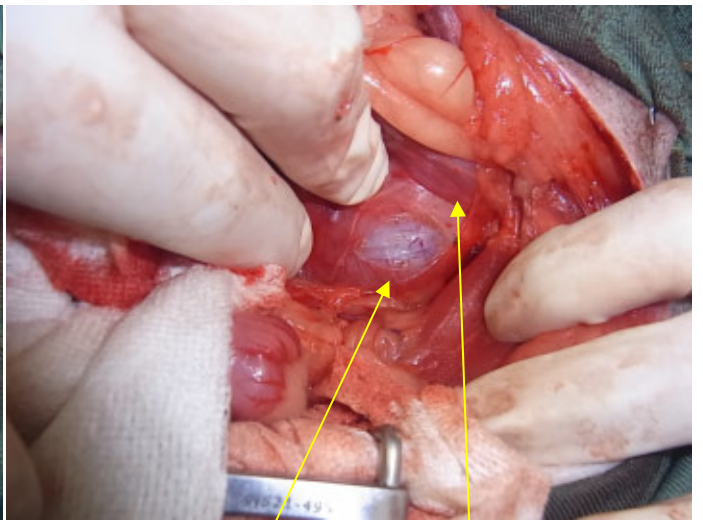
骨盤腔内腫瘍切除手術



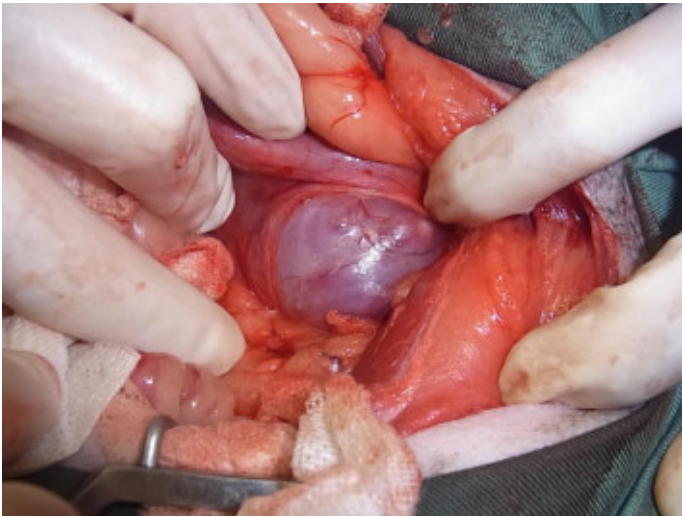
直腸を圧迫 骨盤腔内腫瘍



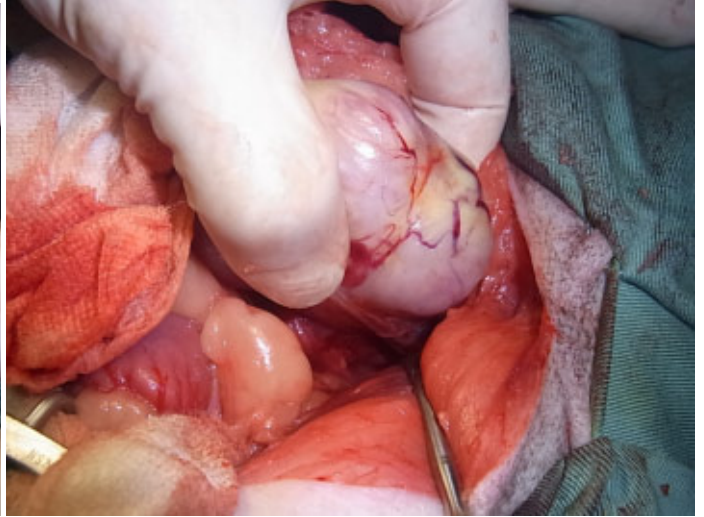
大腸 腫瘍



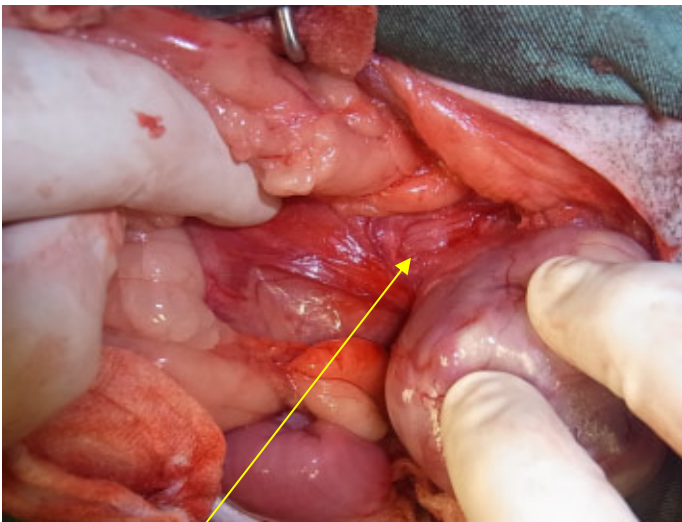
後腹膜腔を切開 血管



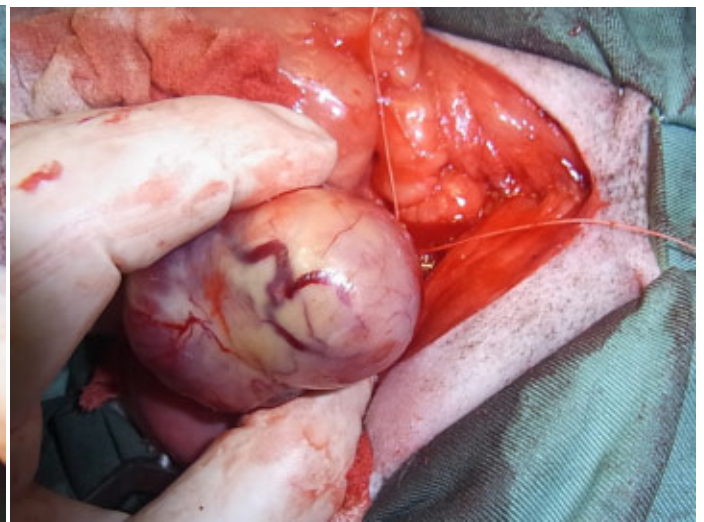
直腸 腫瘍



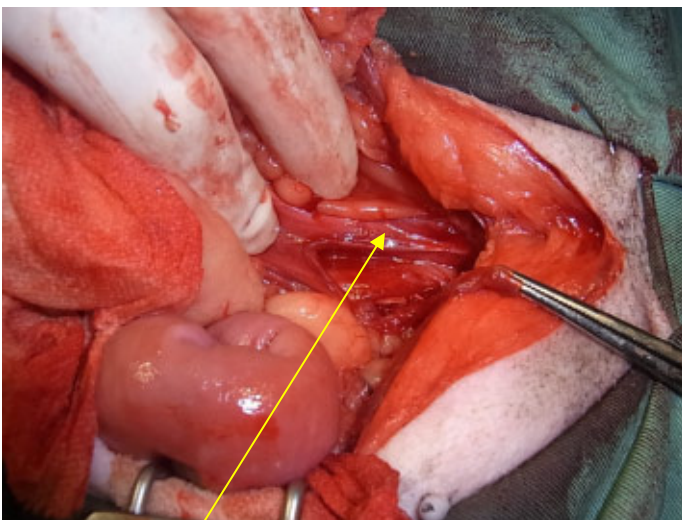
底部を結紮



直腸より腫瘍が発生



直腸 切除後





耳道内腫瘍



レーザーメス切除後縫合



切除腫瘍 (5×4.5cm)