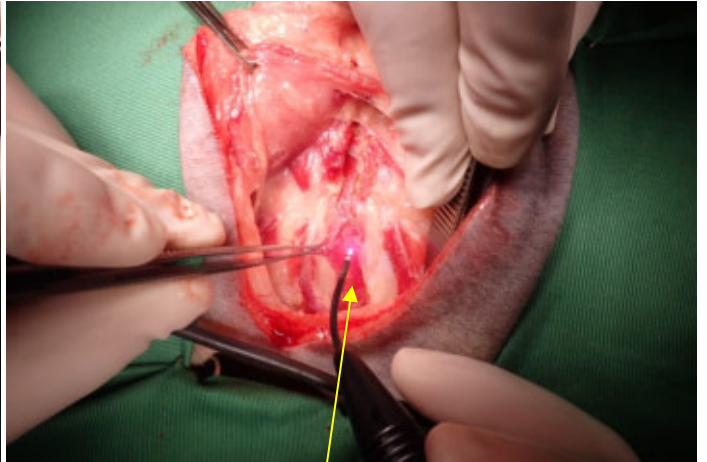


左肺切除手術



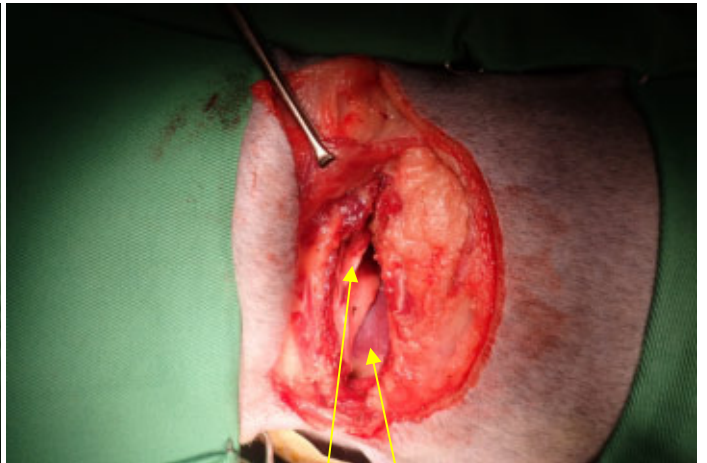
レーザー位メスにて皮下組織を切開



外肋間筋を切開



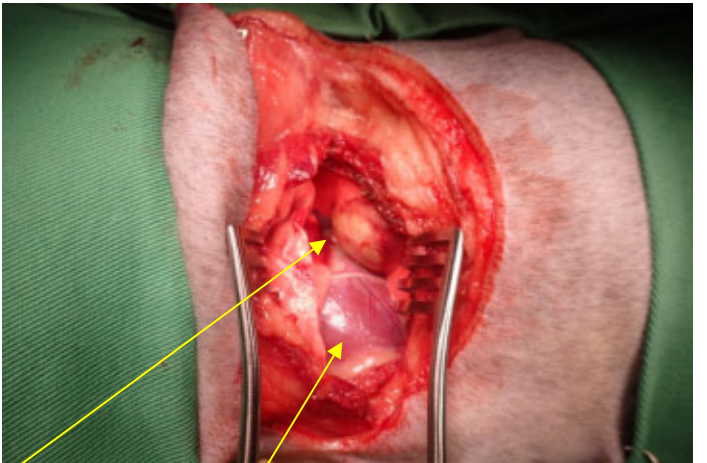
開胸



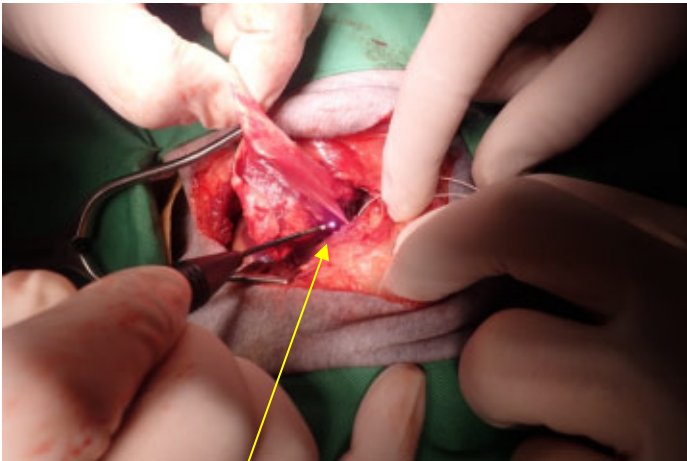
肺 心臓



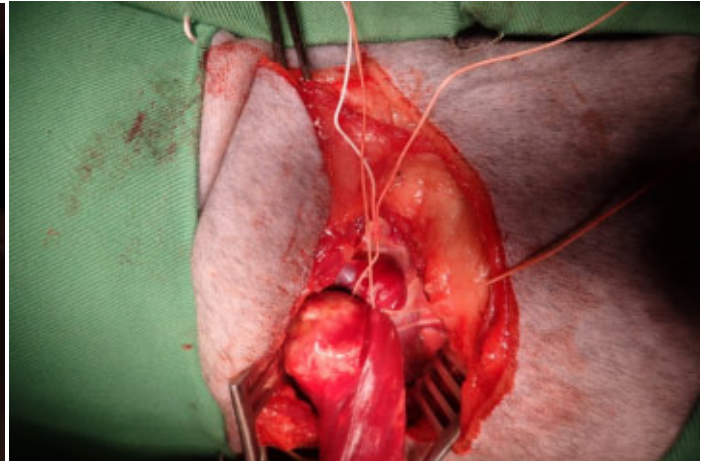
腫瘍



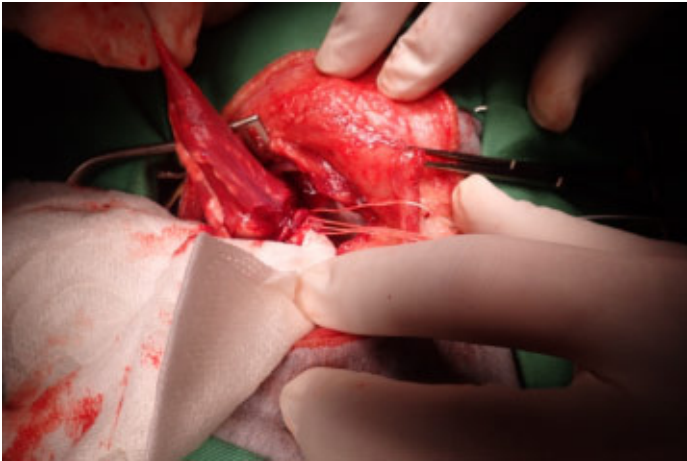
心臓



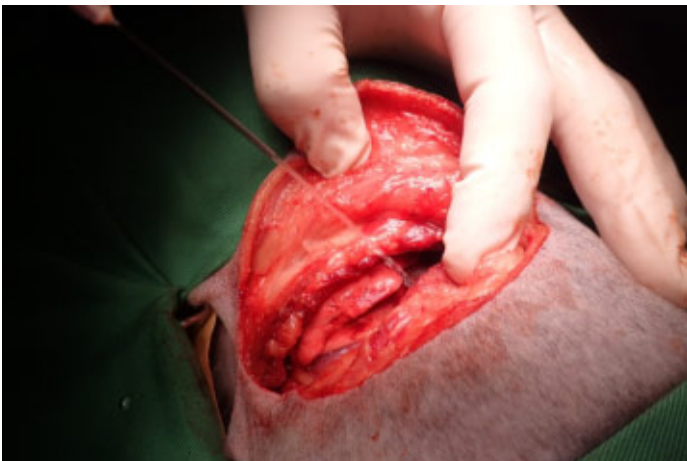
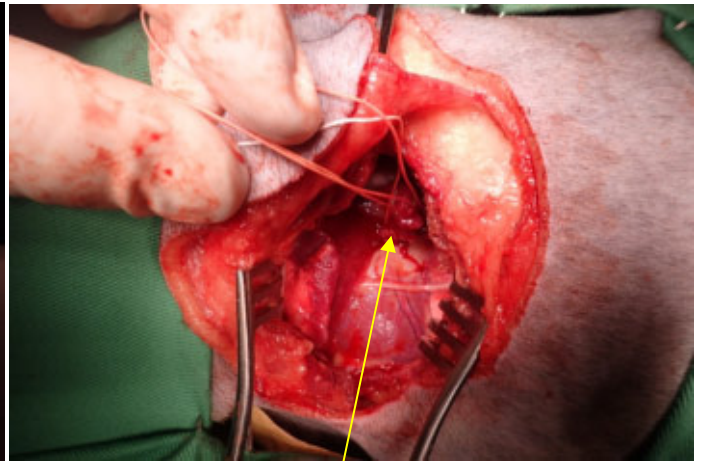
肺の間膜を切開



腫瘍 肺動静脈、気管を同時結紮



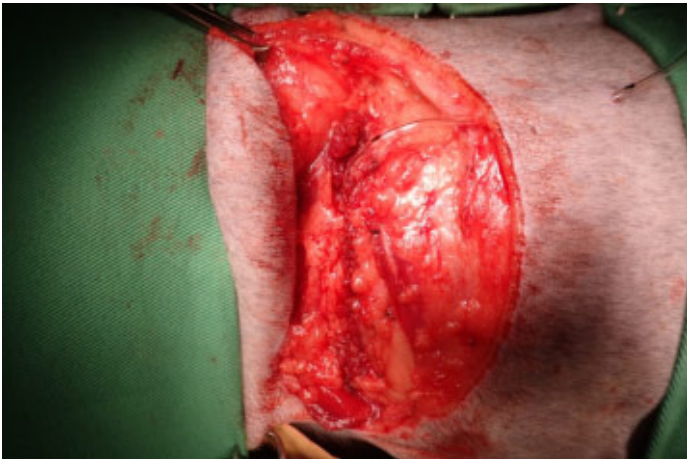
切除後



胸腔内を洗浄



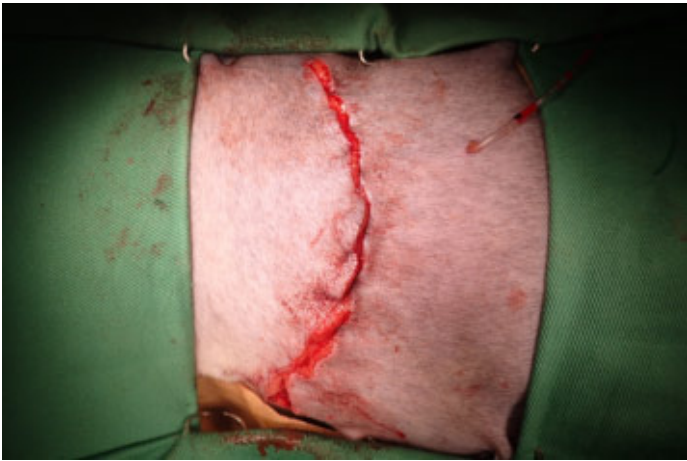
マットレス縫合と連続縫合にて閉胸



閉胸 胸腔内ドレーン



筋肉の縫合



皮内縫合



皮膚縫合



肺腫瘍部位