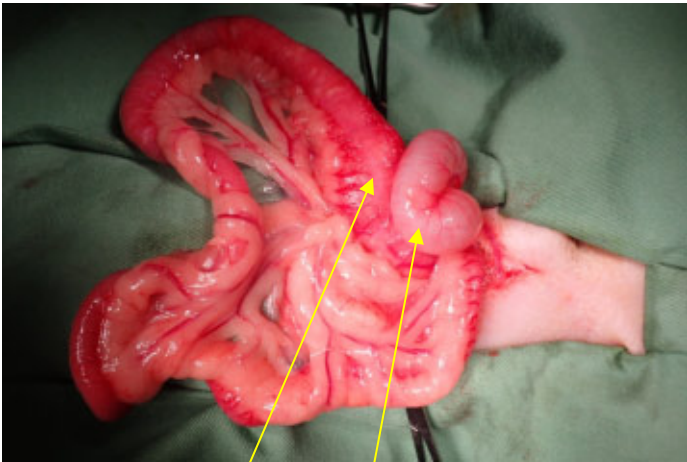
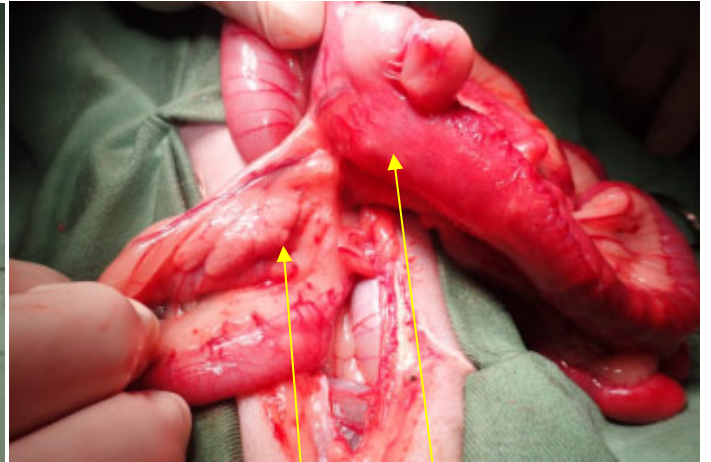


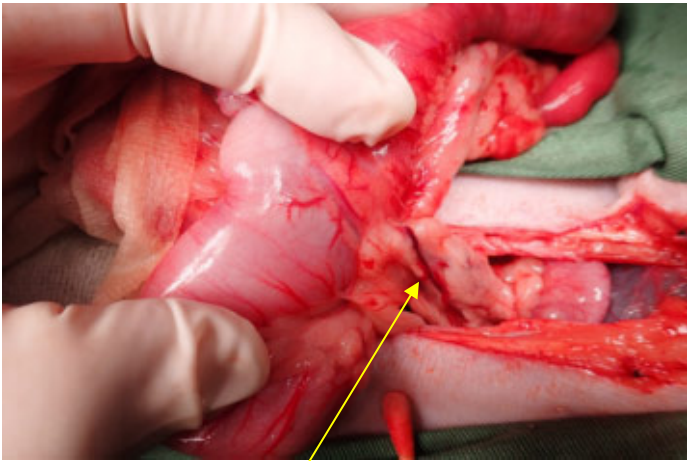
## 腸管切除手術



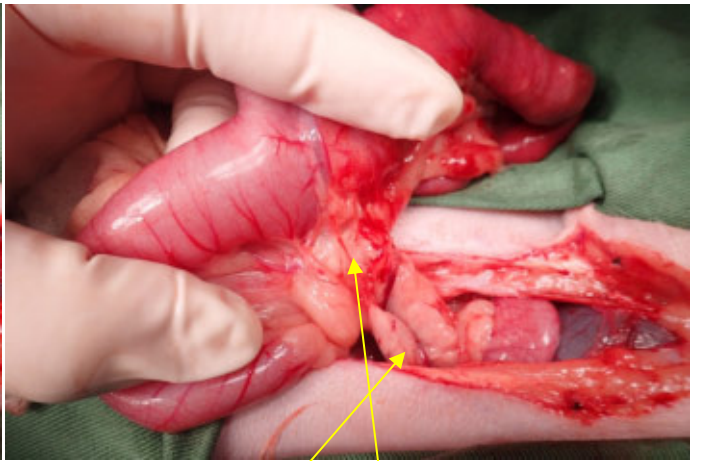
腫瘤部位 盲腸



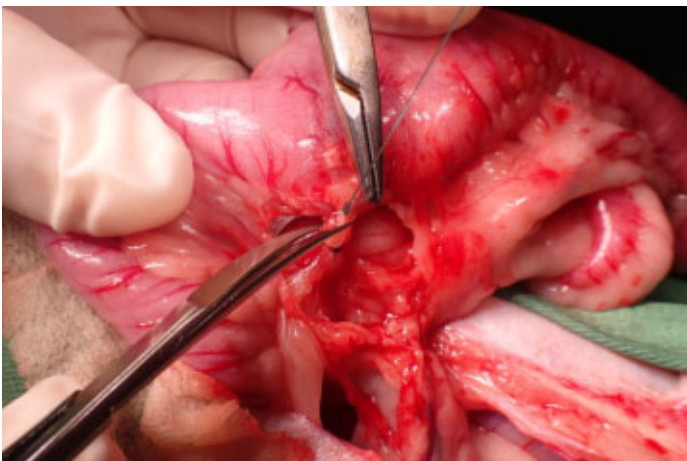
脾臓との癒着 腫瘤



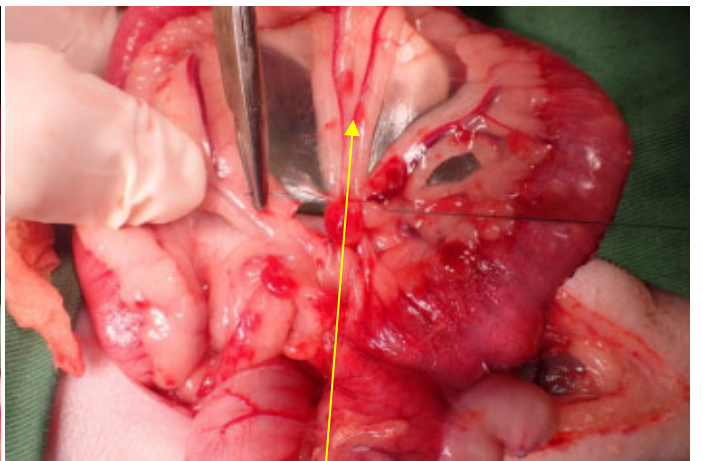
脾臓



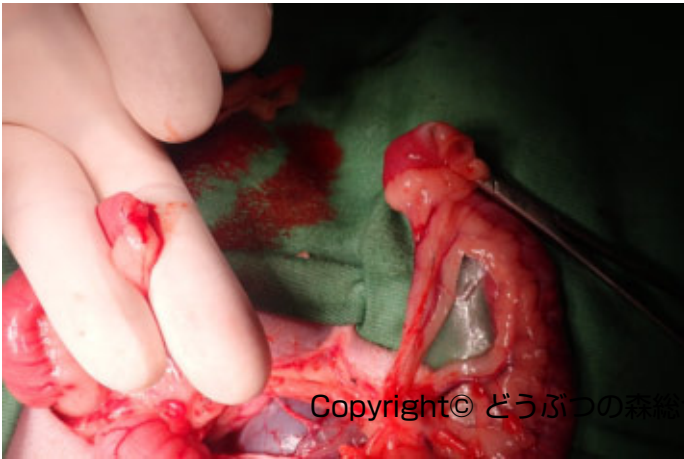
腸管と脾臓の癒着部位を剥離



結紮離断



切除腸管領域の血行を遮断



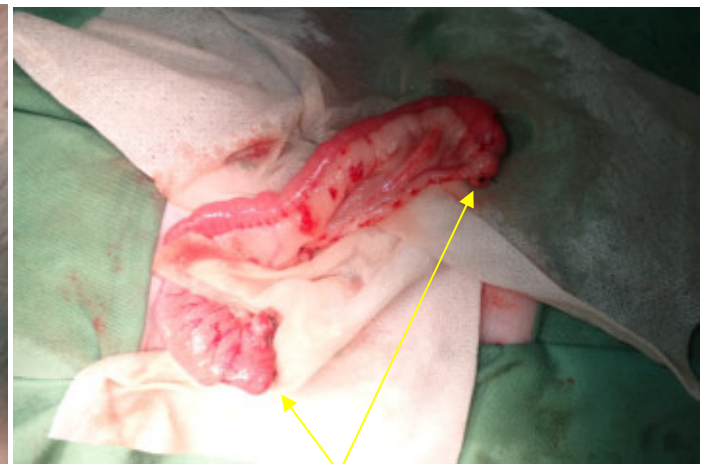
腸管の切除（小腸側）



腸管の切除（大腸側）



切除腸管断端部を縫合



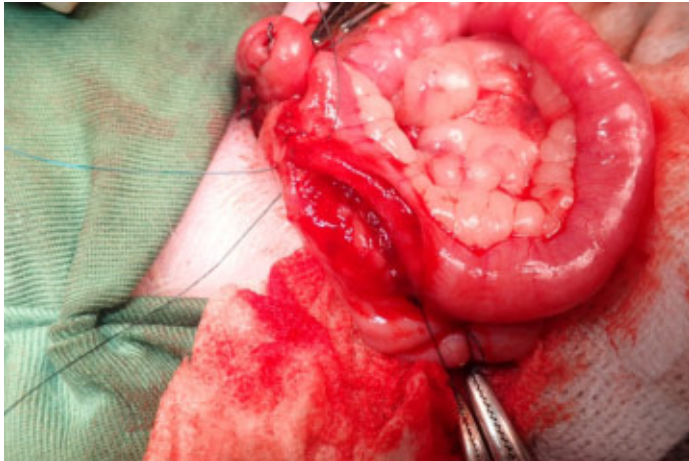
左右腸管断端部縫合終了



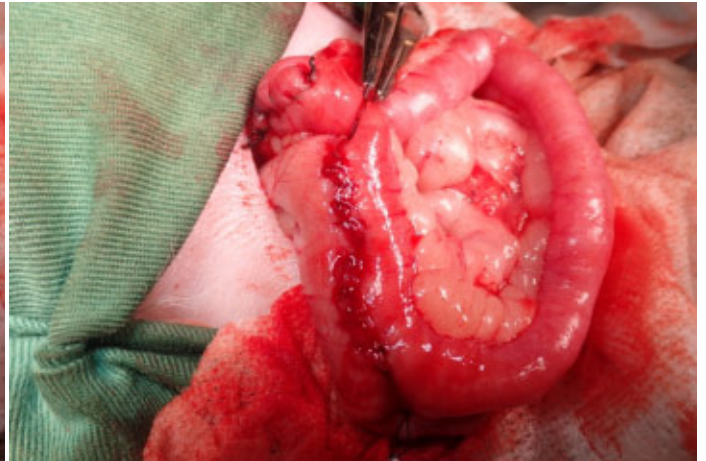
切開領域の腸管の縫合



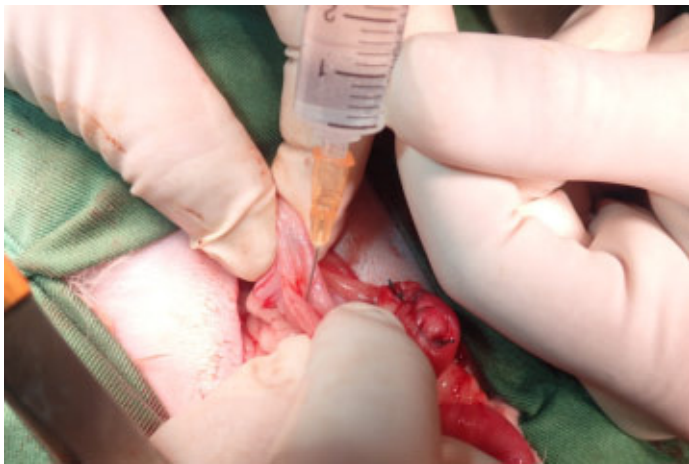
左右の腸管を切開



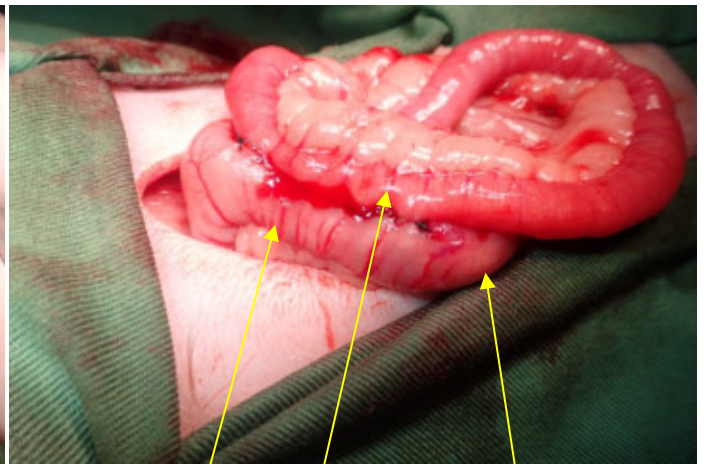
腸管の縫合



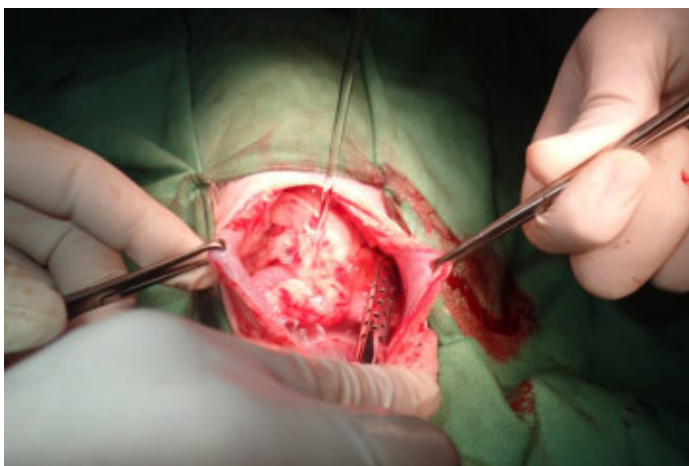
腸管側々縫合終了



縫合部漏れ試験



大腸側 小腸側 人口盲腸



腹腔内洗浄



腹膜縫合



皮膚縫合



切除腸管